

SHARP

MX-M620U MX-M550U
Digital Multifunctional Systems



**FAST, POWERFUL DOCUMENT
PRODUCTION SYSTEMS**



SHARP **DOCUMENT SOLUTIONS**



PRINT

COPY

OFFERING SECURE, **PRODUCTIVE** SOLUTIONS FOR **HIGH-VOLUME** DEMANDS

The Sharp MX-M620U & MX-M550U are the key to faster, powerful and more secure document management for the performance-driven office. These complete multifunctional systems bring control to your office communications, with productivity-boosting features, reliable high-speed and high-volume output. Its powerful network scanning and integrated document management capabilities let you distribute information efficiently and effortlessly. And, enhanced security features on the MX-M62/55 series safeguard your office communications without affecting workflow.

DESIGNED WITH **SIMPLICITY** AND THE **ENVIRONMENT** IN MIND

The MX-M62/55 series is easy for everyone in your office to use, regardless of ability or experience. A large, 8.9-inch touch-screen LCD control panel clearly displays easy-to-follow instructions to navigate users through advanced functions. Usability is further enhanced by Sharp OSA™ (Open Systems Architecture) which allows third-party software developers to customise the MX-M62/55 series for specific user applications.

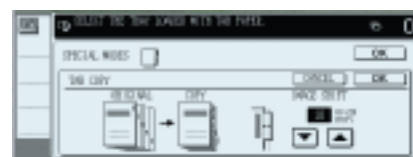
The MX-M620U & MX-M550U have been recognised by the Energy Star programme, an international standard for energy-efficient products. It also complies with the RoHS* Directive restricting the use of hazardous substances.



* Restriction of the use of certain Hazardous Substances



Scan screen



Tab Copy screen

KEY FEATURES

Exceptional Productivity

- Speedy output of max. 62 ppm (MX-M620U), and 55 ppm (MX-M550U) and quick first copy out time
- Standard stackless duplex module and 150-sheet Duplex Single Pass Feeder
- Professional job finishing options include booklet making and post-sheet insertion
- Network tandem function^{*1} doubles output speed by linking two machines
- Large paper capacity of max. 6,600 sheets
- Job Build for large-volume documents
- Efficient electronic sorting, RIP Once/Print Many, and offset stacking

Superb Image Quality

- 1200 x 600 dpi resolution^{*2} and 256-level greyscale
- Digital auto exposure control and Text/Photo mode
- Feedback process control monitors toner density to maintain print quality

All-in-One Performance

- Powerful network printing^{*1}
- PCL5e/PCL6 and optional PS3 emulation
- Optional network scanning with scan to e-mail/FTP server/HDD/desktop/network folder (SMB)
- Sharpdesk™ for easy, integrated document management on a PC
- Document filing function to instantly reuse saved jobs
- Optional Super G3 fax and Internet fax
- LDAP support for easy browsing of e-mail addresses and fax numbers



Versatile Operation

- 8.9-inch touch-screen LCD control panel
- Supports the latest operating systems and network protocols, including IPv6
- Sharp OSA™ (Open Systems Architecture)^{*3} allows integration with software programmes and makes them accessible from the LCD control panel
- Advanced device management with Sharp network utilities^{*1}

Multi-Layered Security

- Secure network interface card restricts unauthorised access^{*1}
- Optional Data Security Kit encrypts and erases confidential data
- SSL (secure sockets layer) and IPsec^{*4} for secure network communications
- Confidential Print secures printing with PIN code authentication
- User authentication for network scanning

Reliable, Heavy-Duty Design

- Highly rigid frame for higher durability
- Stable paper feed with full-grip short paper path
- Lead and chromium-free design (RoHS compliant)
- Job Status screen lets you view the list of jobs in progress

*1: U models require optional MX-NBX1

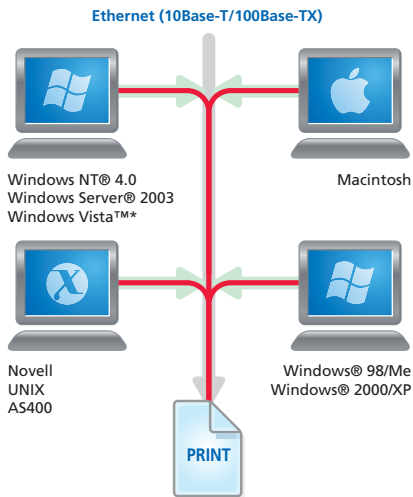
*2: Equivalent with smoothing

*3: Requires optional MX-AMX2 and/or MX-AMX3

*4: Available at a later date

PRINT

HIGH PERFORMANCE PRINTING



* Available at a later date

The Sharp MX-M62/55 series of network printing* solutions is built for speed. Fast, reliable output of large-volume print jobs keeps offices productive. And the RIP Once/Print Many feature helps workplace efficiency keep pace by requiring only a single download of data from your PC for printing.

* U models require optional MX-NBX1

at a glance...

- **Fast, high-volume printing** of 62 ppm (MX-M620U), and 55 ppm (MX-M550U)
- **Duplex printing, even on heavy paper** up to 205 gsm saves you filing space and paper costs
- **PDF/TIFF direct print**¹ — save valuable time by printing PDF and TIFF files without using the printer driver, either by calling and printing the file directly from an FTP server, direct printing from a Web page, or direct printing of e-mail attachments
- **Supports PCL5e and PCL6** printer language emulations; **PostScript 3** is available² for compatibility with more fonts and better graphics handling
- **Network printing**³ supports the latest and most commonly used network operating systems and protocols, including Windows Vista™ (available at a later date) and next-generation IPv6
- **Network tandem function**³ — double the output speed by using two MX-M series machines on the same network
- **Offset stacking**⁴ outputs each print job slightly set apart from the previous for easier retrieval

*1: Direct PDF printing requires optional MX-PKX1; may not support all PDF or TIFF file formats

*2: Requires optional MX-PKX1

*3: U models require optional MX-NBX1

*4: Requires optional finisher or saddle stitch finisher

Various Applications



Carbon copy print



Tab print

High-Quality Imaging

The MX-M62/55 series fine particle toner technology, 1200 x 600 dpi resolution*, and 256-level greyscale ensure that all your printing needs will be met with exceptionally crisp, clear, and professional-quality documents.

* Equivalent with smoothing

Special Applications

- **Carbon copy print** — print multiple copies of the same data on plain and/or coloured paper fed from different paper trays
- **Tab print** — print directly onto tabs on document separators and insert them into assigned positions
- **Form overlay** — store document formatting such as letterheads, eliminating the need for pre-printed paper
- **Barcode font print** capability allows convenient in-house production of barcoded documents (requires optional AR-PF1 Barcode Font Kit)

COPY

PRODUCTIVE COPYING

150-Sheet Duplex Single Pass Feeder

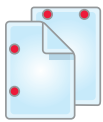


The MX-M62/55 series accelerates output through continuous, high-speed copying with quick first copy out time to handle heavy document traffic with unmatched efficiency. Other productivity boosters, like the impressively large paper capacity and the auto tray switching function, reduce interruptions and minimise machine downtime.

A Variety of Job Finishing Options



Saddle stitching



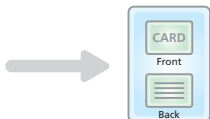
Hole punching



Post-sheet insertion



Card shot



Stamp



at a glance...

- **Fast copying** at 62 cpm (MX-M620U), and 55 cpm (MX-M550U)
- **Quick first copy out time** of 4 seconds
- **Convenient 150-sheet DSPF** (Duplex Single Pass Feeder) makes any scan job easy; double-sided documents are scanned in one pass at a speed of **76 originals per minute**^{*1}
- **Scan Once/Print Many, electronic sorting, and offset stacking**^{*2} for highly productive copying
- **Large paper supply** of up to 6,600 sheets
- **Auto tray switching** reduces interruptions by automatically switching to a different tray when the first becomes empty
- **Job Build function** — large-volume jobs of up to 10,000 pages^{*3} can be scanned in batches and stored for output as a single job
- **Digital auto exposure control** and **Text/Photo mode** ensure optimum copy quality
- **Image editing functions** — multi-shot (4-in-1, 2-in-1), mirror image, and more

*1: 65 originals per minute in simplex mode

*2: Requires optional finisher or saddle stitch finisher

*3: Measured using Sharp's standard chart (A4 with 6% coverage). The number of pages that can be stored for the Job Build function depends on the machine's HDD capacity and other conditions.

Automated Finishing Options

Optional finishing peripherals capable of multi-position stapling, saddle stitch booklet finishing, and hole-punching can be added to create professional-looking documents. An inserter is also available for attaching pre-printed covers or inserts, up to 256 gsm, to your documents.

Special Applications

- **Network tandem function**^{*} — double the output speed by using two MX-M series machines on the same network
- **Card shot** — one-touch scanning and copying of both sides of a card (credit cards, ID cards, etc.) onto a single page
- **Book copy** — compiles copies of a book or bound originals into pamphlet format
- **Tab copy** — copy directly onto tabs on document separators and insert them into assigned positions
- **Stamp function** — label your copies with entered text, page numbers, the date, or a character set such as "CONFIDENTIAL"

* U models require optional MX-NBX1



POWERFUL NETWORK **SCANNING**

The MX-M62/55 series' capacity for powerful network scanning* is what makes it such an ultra-efficient hub of office communications. After simultaneously scanning both sides of a document, the MX-M62/55 series lets you quickly and easily route the scanned documents to your choice of destinations, in your choice of file formats.

* Requires optional MX-NSX1. For U models MX-NBX1 is also required.



QWERTY keyboard for LDAP and others

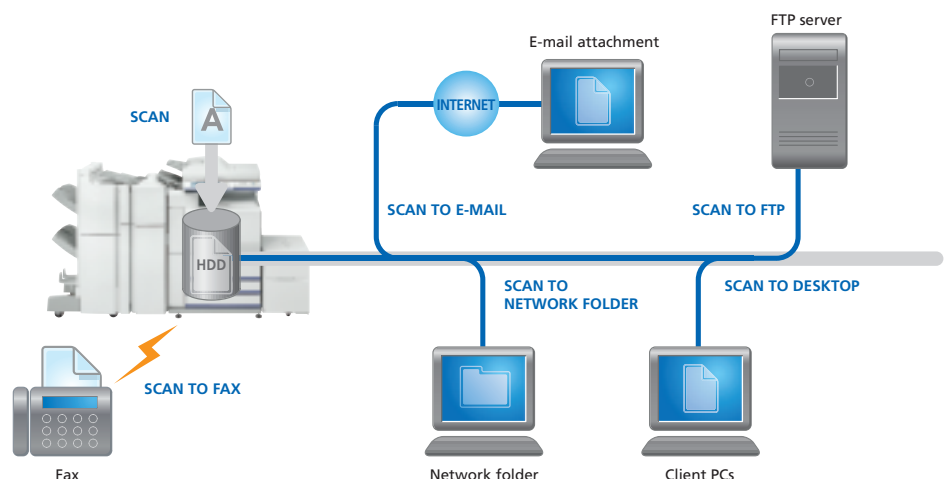
at a glance...

- **150-sheet DSPF** (Duplex Single Pass Feeder) scans both sides of an original up to A3 in size in a straight path
- **Multiple scan destinations** — scan to e-mail, FTP server, hard disk, PC desktop, or network folder (SMB)
- Compatible with **TWAIN-compliant** applications (pull scan)
- Useful utility software — **Sharpdesk™** document management software
- **Lightweight Directory Access Protocol** (LDAP) support allows easy browsing and storing of e-mail addresses for rapid distribution of scanned documents, as well as automatic synchronisation with your primary e-mail server
- **Various scanned file formats** — TIFF, TIFF-FX (TIFF-F)¹, PDF², and linearised PDF² which allows the first page of the file to be displayed in a Web browser before the entire file is downloaded
- **Job Build** function — up to 10,000 scanned pages³ can be stored on the hard disk
- **Easy text entry** — preset frequently used e-mail subject titles or messages for easy one-touch entry or directly enter text from the MX-M62/55 series' LCD control panel

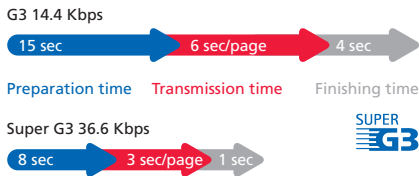
*1: Requires optional MX-FWX1

*2: Requires optional MX-PKX1

*3: Measured using Sharp's standard chart (A4 with 6% coverage). The number of pages that can be stored for the Job Build function depends on the machine's HDD capacity and other conditions.

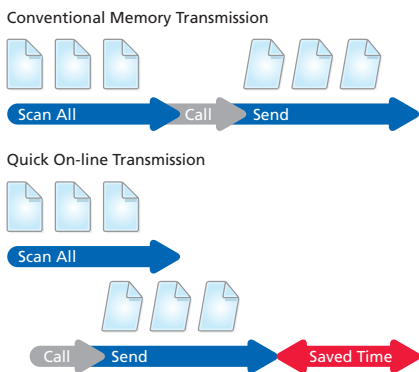


INTEGRATED FAX WITH CHOICE OF TRANSMISSION

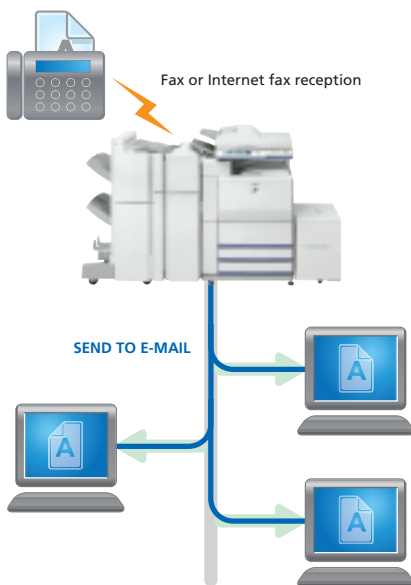


The MX-M62/55 series offers integrated, versatile faxing as an option for time and paper-saving communications. The inbound routing function cuts down on paper usage by allowing you to view incoming faxes on your PC before deciding which ones to print out. And easy Internet faxing with other compatible machines gives you yet another fast, economical transmission option.

Note: Faxing requires optional AR-FX8



Inbound Routing to E-Mail



at a glance...

- **Extremely versatile** — send or receive single or double-sided faxes up to A3 in size
- **Saves time** — Super G3/JBIG compression for extra speed
 — on-line transmission reduces total operation time
 — 150-sheet DSPF enhances the efficiency of your fax jobs
- **Paperless faxing with inbound routing** lets you check incoming faxes via e-mail and print only what you need
- **Rapid transmission** — register up to 999 frequently used numbers and dial with one-touch operation
- **Duplex faxing** — scan and send both pages of two-sided documents and print incoming faxes onto both sides of paper
- **Flash memory** prevents data loss in case of power failure
- **Internet fax*** send and receive faxes over the Internet with other ITU-T T-37-compliant machines for faster and easier transmissions

* Requires optional MX-FWX1

Paperless Faxing with Inbound Routing

The MX-M62/55 series can be set to forward incoming fax data to a designated e-mail address. You can then check those incoming faxes on a PC and print only what you need.

PC-Fax and PC-Internet Fax

A PC-Fax/PC-Internet Fax* function allows you to directly send a document created on your PC to a recipient's fax machine via a phone line or the Internet. Since all faxing procedures are done on your PC without printing to paper, this function saves time and paper costs, increases faxing productivity, and retains original document quality.

* PC-Fax requires optional AR-FX8 and PC-Internet Fax requires optional MX-FWX1

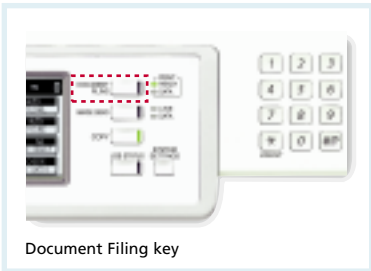


"Send Fax" command from PC

Fax is sent to recipient fax machine



EFFICIENT **FILING** FOR FASTER WORKFLOW



Document Filing key

The MX-M62/55 series can be entrusted to handle all your filing needs with unsurpassed efficiency. Quick File Folders let you temporarily keep data on the hard disk for use later on, thus eliminating the need to reload or rescan. Longer-term storage options, such as centrally located files for convenient sharing or secure, private files for safely storing sensitive data, simplify document management and make data retrieval easier than ever.

Quick Filing with Temporary Storage

Save up to 10,000 pages or 1,000 files^{*1} of processed copy, print, scan, and fax^{*2} job data for temporary storage on the hard disk for later use, eliminating the need to recreate jobs.



Document Filing screen (main folder)

Advanced Filing for Long-Term Storage

Save job data on the hard disk in up to 500 folders with customised names and locations and with enhanced security features to protect your sensitive data. The MX-M62/55 series stores up to 20,000 pages or 3,000 files^{*1}. Storage options include:

- Main Folder — stores files in a central location for convenient workgroup sharing
- Custom Folder — stores confidential files in private folders with password security

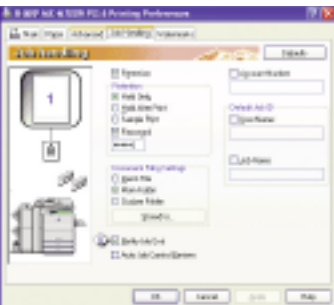
*1: Measured using Sharp's standard chart (A4 with 6% coverage). The Quick File Folder shares the HDD with the Job Build function.
 *2: For fax and Internet fax jobs, only transmitted data (not received faxes) can be saved in the Document Filing function.



Web access screen

Easy Access

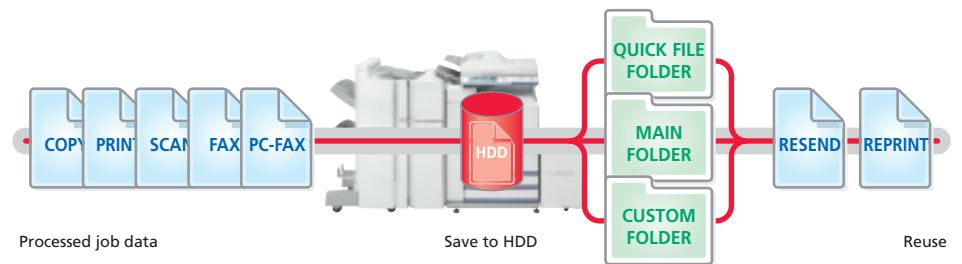
Conveniently access documents stored on the hard disk from the control panel or through a Web browser.



Document Filing settings

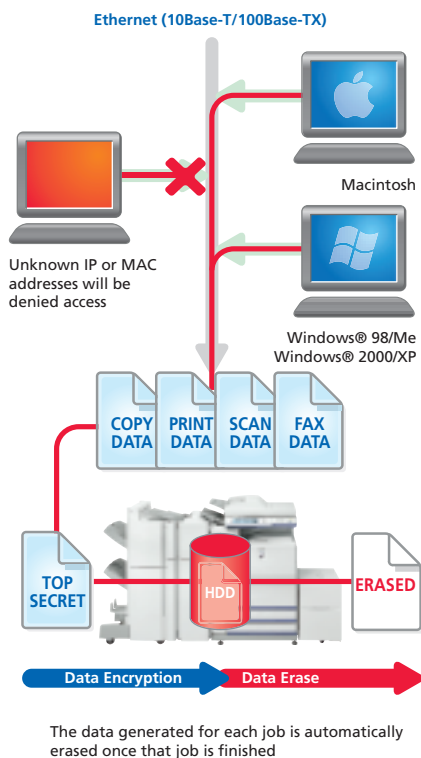
Secure Storage

With the optional Data Security Kit installed, all data that goes through the MX-M62/55 series hard disk is encrypted, enabling you to protect confidential data and documents from unauthorised access.



RELIABLE, MULTI-LAYERED SECURITY

The MX-M62/55 series incorporates layer after layer of network and data protection to make it as secure as it is powerful. Sharp's industry-leading security solutions block unauthorised access to your documents, encrypt stored data, and protect sensitive information by requiring user identification. All of these features, and more, safeguard your workplace documents and give you peace of mind.



at a glance...

- **Data Security Kit**^{*1} encrypts and erases any data on the hard disk or internal memory safely and completely after use
- **Secure network interface card**^{*2} provides a firewall that prevents direct connection and access by unauthorised users
- **Secure Sockets Layer (SSL)** encrypts data communications to prevent data leakage through the network; supports HTTPS and IPP-SSL^{*3}
- **IPsec compatibility**^{*4} ensures an even higher level of network security
- **Confidential data storage and printing** protects sensitive information by requiring the user to enter a PIN code before the documents are produced
- **User authentication** requires logging into the machine with passwords for machine access
- **Secure data storage for Document Filing**^{*5} all data that goes through the hard disk is encrypted, while passwords used in the Advanced Filing function ensure solid security
- **Auditing mode** — keep track of and control the amount of use by employee or department

*1: Optional

*2: Optional MX-NBX1 for U models

*3: SMTP-SSL, POP3-SSL, and FTPS available at a later date

*4: Available at a later date

*5: Requires optional Data Security Kit

Data Security Kit

Digital copiers/printers or multifunction products can retain hundreds of pages of confidential information from previous jobs on their hard disks or internal memory. To safeguard this information from unauthorised access, the optional Data Security Kit automatically encrypts and erases the data after each job is complete. It also encrypts data stored on the hard disk and in the address book.

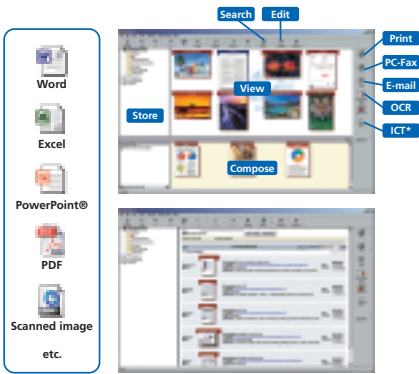
Secure Network Interface Card

The network interface card* provides highly secure operation by restricting access to the MX-M62/55 series on your office network. Only PCs that have either their IP address or MAC (media access control) address registered are allowed to use the MX-M62/55 series. Attempted access from an unknown IP or MAC address will be denied, preventing unauthorised use.

* U models require optional MX-NBX1



EFFECTIVE UTILITY SOFTWARE



Search screen

* Image Compression Tool for converting images into high-compression PDF files

Easy Document Management with Sharpdesk™

Sharp's original document management software, Sharpdesk™, lets you manage documents in over 200 file formats in a single application right on your PC desktop, making it possible to integrate scanned paper-based documents and files created in popular applications such as Word. Features include:

- Intuitive desktop display features **thumbnail** viewing
- Sharpdesk Imaging provides **annotation** tools for paper-free proofreading
- Sharpdesk **Composer** combines different types of files into a single document
- **Optical character recognition** converts documents into editable text files
- **Output zone** distributes files to e-mail, printers, and other applications
- **File search** allows searching by file name, keyword, or thumbnail



Web-based PAU 4.0

Advanced Device and Job Management

- System set-up is accessible via a standard Web browser, enabling administrators to effortlessly configure system settings, including user control and security.
- **Printer Administration Utility** makes printer networks easier to manage by allowing administrators to customise monitored items and view settings, such as the IP address, directly from their PC through a Web browser.
- When the MX-M62/55 series is low on paper or toner, **Printer Status Monitor** will alert you in the form of easy-to-understand graphics, allowing you to avoid problems before they arise.
- The **Job Status screen** on the control panel displays a list of all copy/print jobs, showing you at a glance the jobs in progress and the position of your job in the queue.



Printer Status Monitor

Sharp OSA™ (Open Systems Architecture)

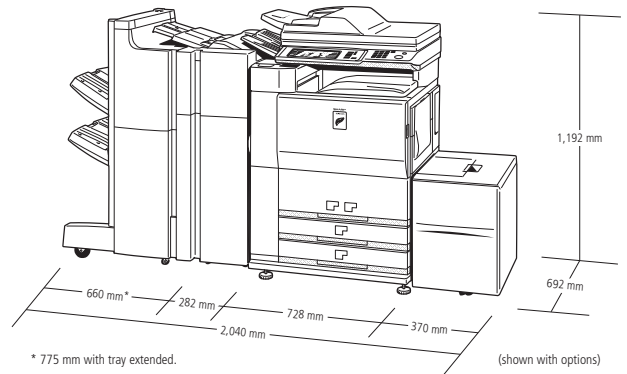
The MX-M62/55 series has an open system architecture that allows third-party software developers to create custom applications that link the MFP to software programmes on a server or PC. The LCD control panel can thus be used to access and operate these software programmes. Sharp OSA has three soft key modules, each of which extends the functionality of the MFP:



Job Status screen

- **Application Integration Module (MX-AMX1)** lets users add data to scanned documents before sending them directly to applications for processing or archiving
- **Application Communication Module (MX-AMX2)** lets remote applications create, configure, and execute scanning and printing jobs on the MFP
- **External Account Module (MX-AMX3)** tracks usage by individuals and workgroups and restricts usage according to individual access rights

OPTIONS



Finishing

- 1. AR-F15 Finisher**
A3 to B5 (offset/staple), A3 to A5R (non offset)
Upper/middle tray: max. 2,000-sheet paper capacity¹
Stapling capacity: max. 50-sheet multi-position staple¹
Staple position: 3 locations (front, rear or both)
- 2. AR-F16 Saddle Stitch Finisher**
A3 to B5 (offset/staple), A3 to A5R (non offset)
Upper/middle tray: max. 2,000-sheet paper capacity¹
Stapling capacity: max. 50-sheet multi-position staple¹
Staple position: 3 locations (front, rear or both)
Saddle stitch tray (lower): 10 sets (11 to 15 sheets), 20 sets (6 to 10 sheets), 25 sets (1 to 5 sheets)
- AR-PN4A 2-Hole Punch Unit**
AR-PN4C 4-Hole Punch Unit
AR-PN4D 4-Hole Wide Punch Unit

- 3. AR-CF2 Inserter²**
A3 to A5R, 60 to 256 gsm, 100 sheets (80 gsm)

¹: A4 or smaller, 80 gsm
²: Requires AR-F15 or AR-F16

Base Unit

- 4. AR-LC6 3,500-Sheet Large Capacity Tray**
A4, 3,500 sheets (80 gsm)
- 5. AR-LC7 3,000-Sheet Large Capacity Tray**
B5 to A3, 3,000 sheets (80 gsm)

Connectivity Board

- 6. AR-FX8 Fax Expansion Kit**
Super G3 fax module
- MX-NBX1 Network Expansion Kit**
- AR-MM9 8MB Fax Memory**
- MX-FWX1 Internet Fax Expansion Kit**
- MX-PKX1 PS3 Expansion Kit**
Enables PostScript printing
- AR-PF1 Barcode Font Kit**
- AR-SM5 256MB Expansion Memory Board**
- MX-NSX1 Network Scanner Expansion Kit**
Scanner interface board for network scanning
- Additional Sharpdesk™ licenses:
MX-USX1 x 1 user
MX-USX5 x 5 users
MX-US10 x 10 users
MX-US50 x 50 users
MX-USA0 x 100 users
- MX-FRX5U Data Security Kit* (commercial version)**
MX-FRX5 Data Security Kit*
Enables data encryption and erasure
- MX-AMX1 Application Integration Module**
MX-AMX2 Application Communication Module
MX-AMX3 External Account Module
Enables machine customisation by third-party software developers

* Available at a later date.
Some options may not be available in some areas.



SPECIFICATIONS

General

Type	Console
Technology	Laser
Engine speed (max.) ^{*1}	A4, portrait MX-M620U 62 cpm/ppm MX-M550U 55 cpm/ppm
Paper size	Max. A3 wide, min. A5R
Paper weight	60 – 105 gsm (bypass: 55 – 209 gsm)
Paper capacity	Standard: 3,100 sheets (1,200-sheet tray, 800-sheet tray, and 100-sheet multi-bypass tray) Maximum: 6,600 sheets
Warm-up time	Less than 120 sec. ^{*2}
Memory	Standard: 128MB Maximum: 384MB 40GB HDD ^{*3}
Power requirements	Rated local AC voltage ±10%, 50/60 Hz
Power consumption (max.)	1.84 kW (220 to 240V)
Dimensions (W x D x H)	728 x 679 x 1,192 mm
Weight (approx.)	185 kg
Features	Card shot, edge/centre erase, job build, pre-heat/auto power shut-off modes, user control (500 accounts), toner save mode, document filing

Copier

Original paper size	Max. A3
First copy out time ^{*4}	4.0 sec.
Continuous copy	Max. 999 copies
Resolution	Scan: 600 x 600 dpi, 600 x 300 dpi Print: 600 x 600 dpi
Gradation	Equivalent to 256 levels
Zoom range	25 to 400% (25 to 200% using D5PF) in 1% increments
Preset copy ratios	10 ratios (5R/5E)
Features ^{*5}	Auto paper selection (mixed size feeding), auto magnification selection, paper type selection, auto tray switching, rotation copy, electronic sorting, network tandem copy, book copy, margin shift, dual page copy, multi-shot (4-in-1, 2-in-1), cover/transparency/tab page insertion, pamphlet copy, rotation sort ^{*6} , 2-sided copy orientation change, XY zoom, black & white reverse ^{*7} , mirror image, duplex copy, reserved copy, job programme, irregular original/paper size input, stamps (date, page number, text, stamp), tab copy

Network Scanner (optional MX-NSX1 required and NBX1 for U models)

Scan method	Push scan (via control panel) Pull scan (with TWAIN-supporting application)
Resolution	200, 300, 400, 600 dpi
File formats	TIFF, TIFF-FX (TIFF-F), PDF, linearised PDF
Scanner utilities	Sharpdesk TM
Scan destinations	Scan to e-mail, desktop, FTP server, network folder (SMB), HDD
Features	Internet fax ^{*8} , PC-Internet fax transmission ^{*9} , LDAP support, direct entry (address, subject, message), 999 one-touch dials, 500 group dials, 8 job programmes, broadcasting, long original scanning (max. 800 mm), mixed size original scanning

Document Filing

Document filing capacity	16GB Main and custom folders: 20,000 pages ^{*9} or 3,000 files Quick file folder: 10,000 pages ^{*9} or 1,000 files
Stored jobs	Copy, print, scan, fax transmission ^{*10}
Storage folders	Quick file folder, main folder, custom folder (max. 500 folders)
Confidential storage	Password protection

Network Printer (optional MX-NBX1 required)

Resolution	600 x 600 dpi 600 x 1200 dpi equivalent with smoothing
Interface	USB 2.0 10Base-T/100Base-TX
Supported OS ^{*11}	Windows NT® 4.0 SP5 or later, Windows Server® 2003, Windows® 98/Me/2000/XP, Mac OS 9.0 to 9.2.2, Mac OS X 10.1.5, 10.2.8, 10.3.3 to 10.3.9, 10.4, 10.4.4, 10.4.7, Windows Vista TM
Network protocols ^{*11}	TCP/IP (IPv4, IPv6, IPsec (LPD)), IPX/SPX (NetWare), NetBEUI, EtherTalk (AppleTalk)
Printing protocols	LPR, Raw TCP (port 9100), POP3 (e-mail printing), HTTP, Novell Printserver application with NDS and Bindery, FTP for downloading print files, EtherTalk printing, IPP
PDL emulation	Standard: PCL 6/5e Option ^{*12} : PS3 emulation
Available fonts	80 fonts for PCL, 136 fonts for PS3 emulation ^{*12}
Features ^{*13}	Network tandem print, RIP Once/Print Many, job retention (print hold, proof print, confidential print), direct PDF/TIFF printing, carbon copy print, duplex print, printer administration utility and status monitor, IP/MAC address filtering, font download, pamphlet style, binding edge, N-up (2/4/6/8), paper/output tray selection, cover/chapter insertion, transparency interleave, fit to page, watermarks, offset output, form overlay, auto configuration, barcode font compatibility, tab print, negative image, mirror image, zoom

Facsimile (optional AR-FX8 required)

Compression method	MH/MR/MMR/JBIG
Communication protocol	Super G3/G3
Transmission time	Less than 3 seconds ^{*14}
Modem speed	33,600 bps to 2,400 bps with automatic fallback
Transmission resolution	From Standard (203.2 x 97.8 dpi) to Super Fine (406.4 x 391 dpi)
Recording width	A3 to A5
Memory	Standard 2MB, expandable to 10MB
Grey scale levels	Equivalent to 256 levels
Features	Duplex transmission/reception, quick on-line transmission, error correction mode, F-Code compatibility (confidential, relay broadcast), LDAP support, 999 one-touch dials, 500 group dials, 8 job programmes, broadcasting number registration, polling, memory transmission/reception, auto reduction (transmission/reception), rotation transmission/reception, print actual size, 2-in-1 transmission, long original transmission (max. 800 mm), PC-Fax transmission ^{*15} , timer transmission, paperless faxing with inbound routing to e-mail, activity report, anti-junk fax, dual page scan, mixed size original scanning

Options

Please refer to the Options section on the previous page.

^{*1}: Copy mode: When copying same document continuously on portrait A4 plain paper in non-offset mode. Print mode: When printing same document continuously on portrait A4 plain paper in non-offset mode, excluding processing time. ^{*2}: At rated voltage, 25°C, 65% RH. ^{*3}: HDD capacity depends on procurement and sourcing status. ^{*4}: Portrait feeding of A4 sheets from main unit's 1st paper tray, using document glass in Auto Exposure mode with polygon motor running. ^{*5}: Some features require option(s). ^{*6}: Not available when equipped with a finisher. ^{*7}: Not available in some regions. ^{*8}: Optional MX-FWX1 required. Max. resolution 400 dpi. ^{*9}: Measured using Sharp's standard chart (A4 with 6% coverage). The Quick File Folder shares the HDD with the Job Build function. ^{*10}: Optional AR-FX8 required. ^{*11}: Optional MX-PKX1 required for Mac OS and EtherTalk. Windows Vista and IPsec available at a later date. ^{*12}: Optional MX-PKX1 required. ^{*13}: Some features are not available according to the printer driver used. ^{*14}: Based on Sharp's standard chart with approx. 700 characters (A4 portrait) at standard resolution in Super G3 mode, 33,600 bps, JBIG compression. ^{*15}: For Windows environments only.

SHARP

Sharp Electronics (UK) Limited, 4 Furzegrund Way,
Stockley Park, Uxbridge, Middlesex, UB11 1EZ
Telephone: 0208 734 2000 Facsimile: 0208 734 2400
Website: www.sharp.co.uk



Design and specifications are subject to change without prior notice. All information was correct at time of print. The ENERGY STAR logo is a certification mark and may only be used to certify specific products that have been determined to meet the ENERGY STAR programme requirements. ENERGY STAR is a US registered mark. The ENERGY STAR guidelines apply to products only in the US, Europe, Australia, New Zealand, and Japan. Windows, Windows Server, and Windows Vista are registered trademarks of Microsoft Corporation. All other company names, product names, and logos are trademarks or registered trademarks of their respective owners. ©Sharp Corporation 2007
Ref: BR-MX-M620/550U/N. All trademarks acknowledged. E&OE.